



SCALE-MAIL

VISIT US AT - ipmsauckland.hobbyvista.com

IN THIS ISSUE

• Chairman's Bit	1
• Bulletin Board	2
• Best of the Year Competition	4
• Events	5
• Wellington Scale Model Expo	6
• Scale Model Expo Comp. Rules	7
• Buy, Sell & Swap Stash	11
• The Model League	12
• 1/32 Tempest Mk.V build - Part 2	13
• Allo Allo! - Arsenal VG-33/39	15
• A Natty Build - 1/72 Folland Gnat	18
• The Man Cave is back	21
• Gallery	25
• Sign Off	29

NEXT MEETING - MAR

Bring along your 2013-14 builds for the Best of the Year competition and display.

See Page 4 for more info.

7.30pm
Tuesday 18th March
Leys Institute (upstairs)
20 Saint Marys Road
Ponsonby

COMMITTEE

Chairman - Peter Harrison
e: gepete@xtra.co.nz
Secretary - Peter Foxley
e: peter.foxley@xtra.co.nz
Treasurer - Kevin Benson
e: heavykev@xtra.co.nz

John Watkins
Dimitri Berdebes
Henry Ludlam

DESIGNER & WEBMASTER

Robert Willis
e: jaxbw@orcon.net.nz

POSTAL ADDRESS

C/- Kevin Benson
87 Point England Road, Point England,
Auckland 1072

EMAIL: ipmsauckland@gmail.com

WEB: ipmsauckland.hobbyvista.com

YAHOO:
groups.yahoo.com/group/ipmsauckland

FACEBOOK:
Link from the IPMS Auckland Website

THE CHAIRMAN'S BIT

Hi Everyone

It's great to see a flock of new members along at recent meetings. We had our first shark modeller... it's great to have people with modelling interests for whom wings and fins just don't belong on aircraft or spacecraft to offer diversity within our ranks.

Thank you to club secretary Peter Foxley for a challenging and at times humorous "recognition quiz". Who would have thought the final outcome would have been decided on a knife edge tie-breaker that required a knowledge of the X-ACTO blade numbering system!

We've had word back from the Model-X organisers and our place has been confirmed for the event in June, so mark down Queen's Birthday Weekend in your diaries and aim to have a few new finished builds ready for display then.

I'm pleased to have gotten 4 models completed for the year so far... with 3 of them actually started in January... and one of my promised ship builds at the painting stage... the pages of Dave Stewart's diary of brave resolutions is burned into my consciousness.

Upcoming plans for club night include an airbrush showdown/low-down... we'll keep you posted on this and other activities that will hopefully add to our collective modelling knowledge and skill set.

I look forward to seeing you all at club night and seeing the tables full of best of year entries this Tuesday.

Cheers

Peter

BULLETIN BOARD

CLUB SUPPORT

The following retailers have kindly agreed to offer IPMS Auckland club members a discount on their purchases upon presentation of their current IPMS Auckland Membership card.

The discount only applies on selected product lines and remains at the discretion of the retailer.

ModelAir

12 Kent St Newmarket
Auckland
p: 09 520 1236
10% on kits

Stoker Models

Cnr Market Rd & Gt South Rd
Auckland
p: 09 520 1737
10% on kits and modelling supplies

Apix Photographic Supplies

130 New North Rd, Eden Terrace
Auckland
p: 307 3177
10% on memory cards, tripods, and accessories.

Avetek Limited

Gwyn and Christina Avenell
28 Lauren Grove, RD 2, Papakura,
Auckland 2582, New Zealand.
p: +64 (09) 298 4819,
m: +64 (0)27 343 2290
e: aveteknz@gmail.com
www.avetek.co.nz
New Zealand Master Agents for:
Auszac ECO Balsa • Bob Smith Industries
- Cyanoacrylates and Epoxies • Airsail
International Kitsets

TOYWORLD

Toyworld Henderson
56 Railside Rd, Henderson
Toyworld Westgate
1 Fernhill Dve, Westgate

15% Off the normal retail price on:

- All models and modeling accessories
- All Hornby
- All Siku
- All Schleich & Collecta figures and accessories
- All Meccano
- Lego (Excludes Lego Mindstorm's they will be 10% if available as most have already been preordered)

(Note: not in conjunction with any other promotion)

Capital Books

110 Featherston Street
Wellington
<http://www.capitalbooks.co.nz>

10% off most items on presentation of IPMS Auckland Membership Card. CB has a list of current IPMS Auckland members for internet purchases.

Merv Smith Hobbies

27 Davis Crescent
Newmarket
Auckland

10% off most items on presentation of IPMS Auckland Membership Card.



Avetek Limited

BULLETIN BOARD

SITUATIONS VACANT – TEA MAN NEEDED

Every club night year after year Barry Burton has made the kettle sing and slaked our thirst with cups of tea and coffee for which we are eternally grateful. Thank you Barry.

This year barry is hanging up the apron and we need someone new to step in and provide a tonic for the troops.

If you're a club night regular please step forward and volunteer for a year. Club civilisation as we know it depends on a half-time cuppa. Come see Barry or myself at club night please.

Thank you in advance.

Build the Same Kit - English Electric Lightning Completion Deadline November Meeting

What could be simpler... everyone builds the same subject and comes up with the same but different! We put them all on the table, compare notes and pick a winner. The English Electric Lightning has been kitted by FROG, REVELL, HASEGAWA, and most recently AIRFIX with definitive kits in 1/48 and a new tool 1/72 kit for 2014. (Not to mention the Trumpy 1/32 kit and the soon-to-be-available Sword T2 and T4 kits...)

MODELAIR has kindly offered club members a special price of just \$25 for the new Airfix 1/72 kit... so what are you waiting for. Give them a call or call in and put your name on the list for when new stock arrives in May.

The challenge is all the greater given the bare metal finish that was often sported by the Lighting... get your afterburners fired up and your model finished by November!



BEST OF THE YEAR COMPETITION

Club Night - Tuesday 18th March

So in my quest to find something clever for this page I googled 'best of the year' and found some nice images but not quite what I was after - so I google 'best model of the year' and the results are interesting....



...you get the gist - so I tried refining my search to 'best plastic model of the year' and, er, lets say the results were disturbing...



Anyway.... even though traditionally the December meeting is the last of the year, it's always short and sweet due to the lure of the pub, and as we're running the league table from April to March, it seems fitting to make the March Club Night 'Best of the Year'!

The rules are simple, bring along your best models builds in the last 12 months for your modelling peers to admire and judge by secret ballot.

Awards will be provided for the following categories:

Best Overall Model for 2013.

Best Aircraft

Best Armour

Best Civilian Vehicle

Best Sci Fi & Science Fact

Best Maritime

Best Figure

Best Diorama

All models entered into the League Table Competition are eligible for entry into this competition. Winners will be announced and awards made at the April Club Meeting.

BULLETIN BOARD

NEW MEMBERS AND SUBS ***** RENEWAL DUE *****

Subs for 2014/15 are due April - see below for club account details or see the club secretary at the next club meeting.

Annual Membership Fees

Membership Type	Description	Cost
Full	Living in the Auckland metropolitan area	NZ\$45
Out Of Town	Living 75km or more from central Auckland	NZ\$30
Junior	Same rights as full membership for those under 16	NZ\$25

IPMS BANK ACCOUNT NUMBER

03 0162 0012960 00

Please add your details so we know who has paid.



EVENTS

CLUB NIGHT EVENTS

March 18th 2014

IPMS Auckland Club Night

April 15th 2014

IPMS Auckland Club Night

MODELLING EVENTS

April 5th & 6th, 2014

Scale Model Expo - Wellington
See Page 4-8 for show info.

May 31st, June 1st & 2nd, 2014

Model X - Auckland
Details to follow

September, 2014

IPMS Nationals - Christchurch
Details to follow

Scale Models Expo



Aircraft, cars, ships, military, figures, sci-fi, railway

5th–6th April 2014
10am – 4pm

Upper Hutt
Arts & Entertainment Centre
836 Fergusson Drive
(next to H2O Xtreme)



- Displays, demos
- Trade stands
- Free parking
- Public competition
- Huge Marklin railway
- Kids model building

For info email:
scalemodelswellingtonnz@yahoo.co.nz

WELLINGTON SCALE MODELS EXPO COMPETITION RULES



**Wellington
5 – 6 April 2014**

**Expressions Arts & Entertainment Centre
836 Fergusson Drive (next to H2O Extreme) Upper Hutt**

Scale Models Wellington is pleased to be able to invite the modeling public to participate in the 2014 Scale Models Expo Model.

The event is to be held in the centre of Upper Hutt in the Expressions Art & Entertainment Centre, 836 Fergusson Drive (between the civic centre and H2O Extreme swimming pool). The expo will feature top modellers from around the country as they battle it out for top honours.

In addition to the competition we have lined up some interesting displays and a full complement of trade stands from New Zealand's leading retailers and manufacturers.

Entries must be delivered and registered between 9am – 11am Saturday 5 April in the entry of the venue hall. To avoid delays it is advisable to register early. Registration forms will be available on the day. Late entries will be at the sole discretion of the Contest Chairman.

There is no entry fee for models and modellers may enter as many eligible models as they wish.

Previous place getting models in the Wellington Scale Models Expo (ie 1st, 2nd or 3rd) are not eligible to re-enter the Scale Models Expo competition.

Entries may be comprised of any generally accepted modeling material (ie plastic, resins, wood, metal). All models must have been built and painted by the entrant.

Final class and category placement of models is at the discretion of the Contest Chairman.

Junior class entrants must be under the age of 17 (ie not reached their 17th birthday) at the time of the competition. Intermediate class entrants must be 14–16 years old at the time of competition.

Any entries that are considered offensive to generally held standards of taste and acceptability may be excluded at the discretion of the Contest Chairman.

Entries may not be removed from the tables until 4pm Sunday at the earliest unless prior consent is given by the Contest Chairman.

All entrants in the competition shall receive a free pass to the venue for the duration of the event.

Prize giving for the competition will be 4pm Sunday. Competitors must be present to accept any awards or prizes. Awards will be made for 1st, 2nd, 3rd and Highly Commended (as applicable) in each of the categories along with overall best in Class and Best in Show.

To be eligible for "Best NZ Subject", the model must be entered in the appropriate NZ section. The only exceptions to this will be NZ subjects in Diorama, Ships Sci-Fi/Miscellaneous, Collections and Junior/Intermediate classes.

Models will be judged by Scale Models Wellington appointed judges. Entries shall be judged according to Scale Models Wellington judging criteria. All judges decisions are final. No correspondence will be entered into.

Scale Models Expo Classes 2014

Unless stated, all categories refer to all scales.

Class A: Aircraft

- A1 NZ Aircraft
- A2 Aircraft smaller than 1/48 – prop
- A3 Aircraft smaller than 1/48 – Jet
- A4 Aircraft 1/48 – prop, single engine
- A5 Aircraft 1/48 – prop, multi engine
- A6 Aircraft 1/48 – jet
- A7 Aircraft larger than 1/48 – prop
- A8 Aircraft larger than 1/48 – jet
- A9 Helicopters
- A10 Box Stock

Class B: Military Vehicles

- B1 NZ military vehicles
- B2 Smaller than 1/48 – military vehicles and equipment
- B3 1/48 – military vehicles and equipment
- B4 1/35 and larger armoured vehicles – WW2 and earlier
- B5 1/35 and larger armoured vehicles – Post WW2
- B6 1/35 and larger softskin vehicles
- B7 Towed artillery and misc military equipment
- B8 Box Stock

Class C: Civilian Vehicles

- C1 NZ vehicles
- C2 Vehicles – Open wheel competition
- C3 Vehicles – factory stock

- C4 Vehicles – modified (custom/hotrod/tuner)
- C5 Vehicles – closed wheel competition
- C6 Motorcycles
- C7 Box Stock
- C8 Trucks/Commercials

Class D: Dioramas

- D1 Diorama – All types

Class E: Ships

- E1 1/500 and smaller
- E2 Larger than 1/500
- E3 Submarines

Class F: Figures

- F1 NZ Figures
- F2 Under 120mm (1/16)
- F3 120mm (1/16) and larger
- F4 Busts

Class G: Science Fact, Fiction and Misc

- G1 Fictional craft, real spacecraft, missiles and vehicles
- G2 Any subject not covered elsewhere
- G3 Collections

Class J: Junior

- J1 Aircraft – Junior
- J2 Aircraft – Intermediate
- J3 Military – Junior
- J4 Military – Intermediate
- J5 Civilian vehicles
- J6 Sci-Fi & Misc
- J7 Diorama
- J8 Warhammer type figures and models
- J9 Figures
- J10 Ships

Class G3 Collections

Collections must consist of five or more closely related items. Previous Wellington Scale Model Expo place winning models may be entered as part of a collection but must not constitute more than 40% of the models entered as part of the collection. All models in the collection must be the sole work of the entrant. Note, that as part of the judging process for collections, the judges would take into consideration the strength of the relationship of the models within the collection.

For example:

Five different WW2 fighters would NOT be a collection.

Five different WW2 fighters from the same unit would be a weak themed collection

Five different WW2 fighters flown by the same pilot would be a weak themed collection

Five Spitfires from the same unit would be a strong themed collection.

If in doubt please contact Scale Models Wellington.

Bases

Bases are allowed in all categories. They will not be considered in the judging except in the diorama classes or where two models are tied for a placing. Any models entered on bases must be securely fixed to the base.

Diorama

A diorama shall generally be vehicles or figures on a single scenic base depicting a scene. Note a single figure, vehicle or aircraft displayed on a base with ground cover will not usually constitute a diorama.

Box stock

Box stock classes are intended to recognize excellent models produced from the materials provided in the box from the manufacturer. For those entering Box Stock please note the following:

- Original instructions must be supplied with your entry.
- Alternative decals may be used.
- No aftermarket or scratch built detailing allowed.
- The modeler may fill gaps and seams, sand off rivets, drill out gun ports, exhausts pipes or other appropriate openings; thin to scale such parts as trailing edges, flaps and doors; and add rigging and antennas.
- Panel lines may be repaired if damaged during construction. Extensive rescribing of panel lines is not permitted.
- Model will only be judged for build and paint quality.

Scale Models Wellington IPMS will take all care with your models but will accept no responsibility for any damage that may occur.

If you have any queries please contact us at:

scalemodelswellingtonnz@yahoo.co.nz

<http://groups.yahoo.com/group/ScaleModelsExpo/>

BUY, SELL & SWAP STASH

Auckland Hobby Fair

SATURDAY 5th April 2014

Freemans Bay Community Centre
52 Hepburn Street,
Auckland City

11.00am to 3.00pm

Entry: \$5 per person (primary school children free if accompanied by adult)

For future information on Collectors Fairs, Hobbies Expo's, Swapmeet etc.

Visit their web-page:
www.aucklandhobbyfair.wordpress.com

ALWAYS CHECK TO CONFIRM
FOR DATES AND TIMES OF THE
EVENT



MODEL KIT STASH

BECAUSE HE WHO DIES WITH THE MOST KITS...WINS !!



HAWKER TEMPEST Mk.V Pt.2

Pacific Coast Models 1/32 Hawker Tempest Mk.V Work In Progress by Barry Burton

The Tempest build continues on its glacial like progress, mainly due to the RAF Camouflage scheme involved and the odd masking difficulties like the stripping of paint while removing the masking tapes etc.

A few build points may be of interest to anybody commencing a Tempest build:

Starting from the rear of the aircraft, namely the tailwheel position, I found that it was necessary to angle the assembly rearwards to establish the correct relationship of the tyre to the indent line in the lower fuselage. The oleo seems to have been moulded in the unweighted position which would be hard to rectify. Fortunately the tailwheel undercarriage doors obscure the problem.

The rear navigation lights which on the full sized aircraft are located in the rear of the tailplane fairing have been omitted in the instructions. The transparencies do exist on the clear plastic sprue.

Moving forward on the aircraft starboard underside I cut out the slot which accommodates the retractable foot stirrup and scratchbuilt the stirrup which is not provided in the kit. I suspect that the stirrup on the full sized machine is directly connected to the handhold above, located just below the lower canopy frame. When the stirrup is extended the handhold flap opens.

Moving to the inboard main undercarriage doors it will be necessary to scratchbuild two



retraction rams – one for each door fixed at the top rear of the doors. I replaced the kit mainwheels with Barracuda Studio Resin items as I suspect the kit items are too deep to have been accommodated in the wheelwells. From memory special wheels and tyres were developed for the Tempest so that they could be more easily housed in the thinner sectioned wing when compared to the Typhoon.

The radiator cooling flap in the lower engine cowling was cut from each fuselage half before assembly and replaced by a scratchbuilt item.

Xtracolour Enamels were used for finishing, with the exception of the painted over Sky rear fuselage band which is Tamiya German Grey Enamel.

All the masking consisted of narrow lengths of Tamiya Masking Tape to follow the curves of the camouflage with larger areas covered by Humbrol Maskol. The enamel surface finish when completely dry was very lightly wet sanded with 1200 grade wet/dry to remove any overspray. The main decaling areas were then sprayed with Watty Estapol Polyurethane Gloss to assist the decals to seat when applied.

The decals are printed by Cartograph from Italy and are extensive, with markings for five aircraft – four camouflaged and one silver and including the machine flown by Jimmy Sheddán, 486 (NZ) Sqdn.

I have elected to depict the aircraft of Sqdn/Ldr Warren Schrader, 486 Sqdn. from April 1945. Schrader was the top scoring Tempest pilot in this Theatre at this stage of WW2. His aircraft carried no kill markings.

The markings SA-A and serial NV969 were kindly printed by a fellow club member for me.



An incidence of silvering with one or two of the engineering stencils provided was experienced. Probably due to lack of preparation of the painted surface on my part.

Once the decals had been placed I gave the entire model a light wash of artists Acrylic Black mixed with a small amount of Burnt Sienna.

A complete overspray of two parts Satin to one part Matt of Watty Estapol Polyurethane approximated the sheen of the original machine,

which when fully dry I once again lightly wet sanded with 1200 grade.

I have photographed the model with the partly completed propeller to show the method used by the kit designer to positively locate the correct pitch angle for the blades. Just the canopy, pitot and several aerials to complete now.

Overall I can't seriously fault this kit. A really accurate enjoyable build.

Allo allo!

Kits of Classic French Aircraft & Vehicles

Arsenal VG-33/39

Rob Willis

Arsenal VG-33/39

In 1936, the French Air Force issued specifications for a lightweight fighter constructed of wood that could be built rapidly in large quantities. The subsequent Program A.23/1937 led to the development of the Arsenal VG.30, the Caudron C.714 and the Bloch 700 - all were ordered as prototypes.

A model of VG.30 already under study was presented at the International Exhibition in Paris in the summer of 1936. The use of a wooden structure was chosen as it was expected to be abundantly available, easy to work with and could be built in sub-assemblies

in multiple locations and therefore less susceptible to supply chain disruption. Unfortunately just the opposite happened: the timber needed was sourced mainly abroad (Red Spruce from Canada) and so supply suffered....

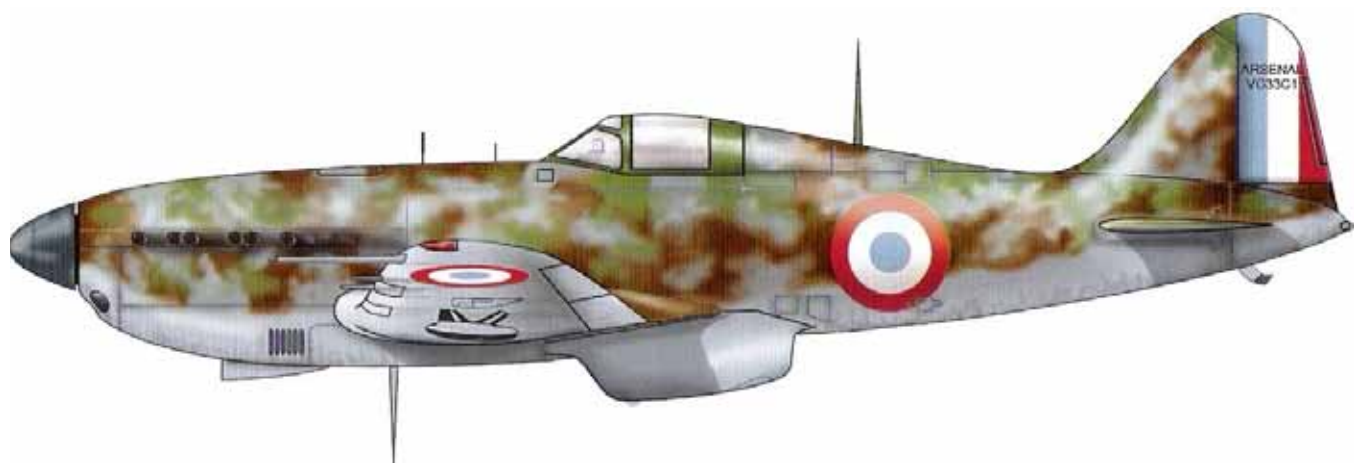
The VG.30 was designed by Vernisse and Jean Gaultier, hence the VG designation of the aircraft. The VG.30 was made of plywood, with a semi-monocoque construction. It was armed with a 20 mm cannon HS.404 (firing through the propeller hub) and 4 7.5 mm machine guns in the wings.

The engine was planned to be the liquid-cooled 12DC Potez V12

producing 610 hp. Due to delays with the Potez engine, the prototype was fitted with a Hispano-Suiza engine (12XCRS), developing 690 horsepower - construction started in the summer of 1937.

It first in October 1938. Official tests between March and July 1939 showed good performance. It was followed by the VG-31 (to be powered by the Hispano-Suiza 12Y-31 with 860 hp). However wind-tunnel tests showed that it would be unstable and so was not built.

The VG-32 (powered by an Allison V-1710C-15 1400 hp engine and requiring a fuselage stretch of 42 cm), was captured by the Germans



Above: Arsenal VG-33

at Villacoublay in 1940 before its first flight. It was equipped with two 20 mm cannons and two machine guns, and 400 aircraft were to be produced from December 1940. However, the American Motors-produced Allison engines could not be provided before the armistice.

The VG-33, which incorporated the fuselage and the engine of the VG-31 and wing of the VG-30, took the air on 25 April 1939. It was tested on 11 June 1939 until March 1940. Performance was such (speeds of 560 km/h reached)

that 220 airframes were ordered on September 12th, the order then being increased to 820 airframes.

Airframe production itself started almost immediately, but the lack of engines meant that very few machines were ready on time. The expected rate of 350 aircraft per month could not be maintained. The first production aircraft flew in April 1940 - some six months late.

167 copies were about to be finished by the Armistice (most engine-less). 19 units were actually delivered

to the Air Force and seven were actually engaged in combat - its operational career lasted one week, during which 36 missions were completed.

An airframe captured by Germany was test flown at Rechlin and pitted against the Bf-109E. Aerodynamically it was found to best the 109, especially in speed and manoeuvrability, but was under-armed in comparison. It was also found that the wooden construction would have given the airframe a considerably shorter operation life.

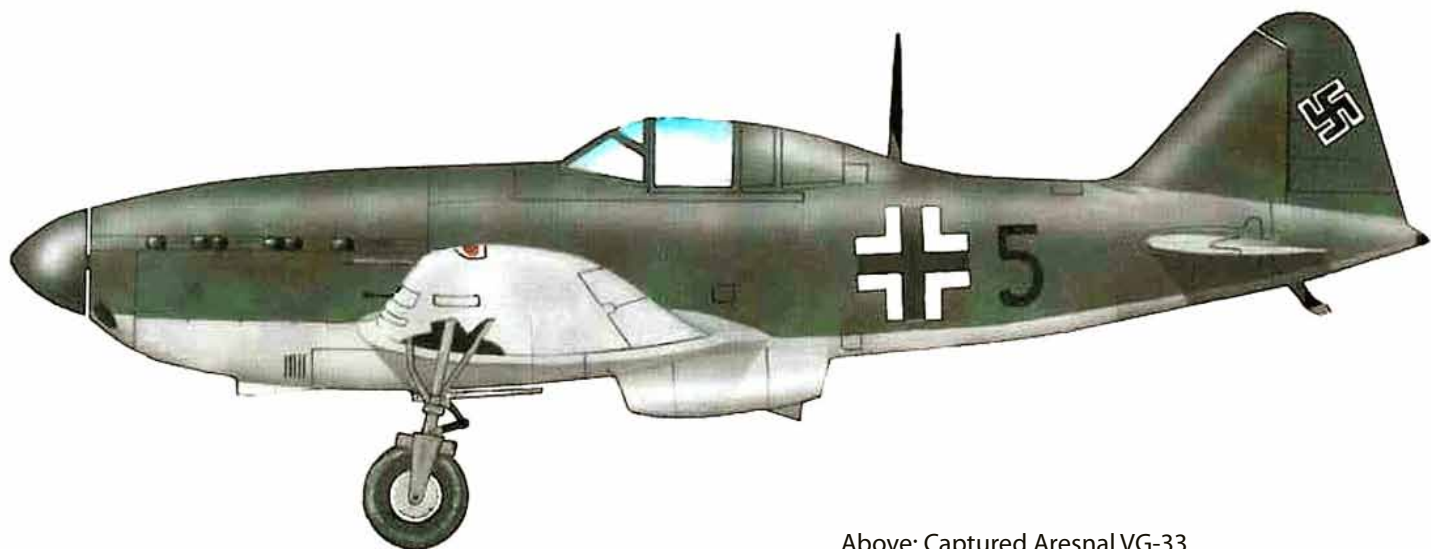
Most of the other airframes were destroyed during the German advance.

The VG-33 was followed by three prototypes all flying in 1940 : the VG-34 with 12Y -45 engine of 960 hp (first flight January 20), the VG-35 with a 12Y -51 engine of 1000 hp (25 February) and VG-36 - which had a radiator assembly resembling the P-51 (14 May). The VG-37 was to be a long-range version of the VG-36 and the VG-38 was to be equipped with 12Y -77 engine fitted with a Brown-Boveri turbocharger. Neither was built .

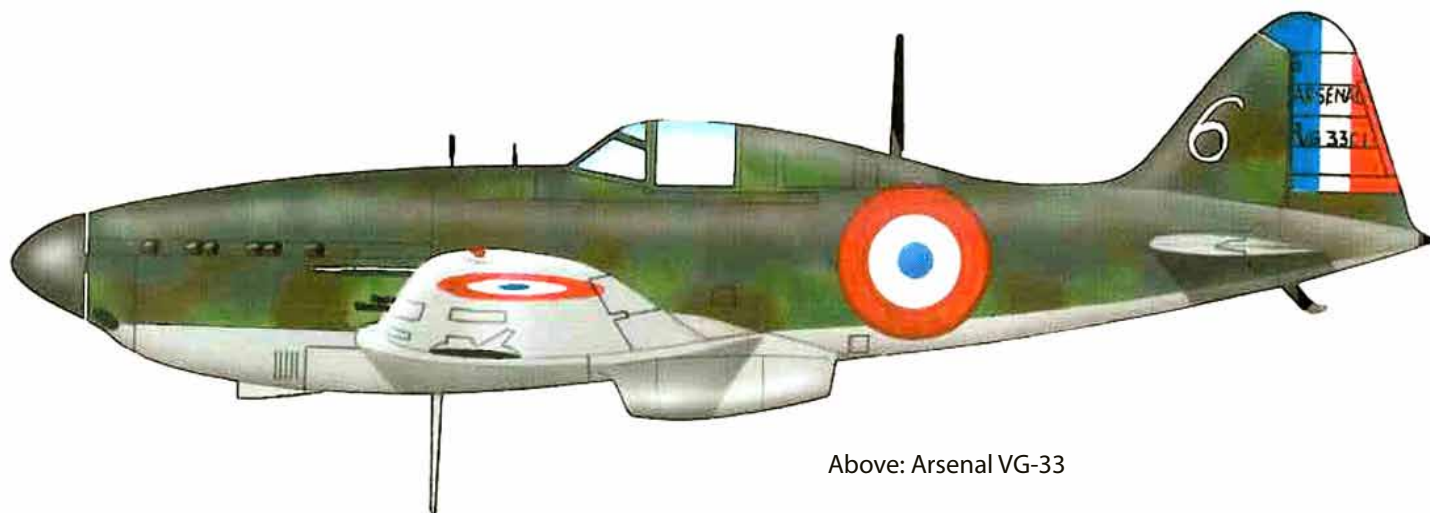
The final development in the VG-30 series of fighters to be flown, the VG-39 commenced its flight test programme on 3 May 1940, and the prototype differed from the VG-33 primarily in having a 1200hp Hispano-Suiza Type 89ter 12-cylinder liquid-cooled engine with an elongated propeller shaft, a revised wing structure

which retained the profile and contours of the earlier wing, and a wing-mounted armament of six 7.5mm MAC 1934 M39 machine guns. During flight testing the prototype VG 39 attained a maximum speed of 625km/h at an altitude of 5750m. The planned production model, the VG 39bis, was to have embodied a fuselage similar to that of the VG 36 and to have supplemented the wing armament with a 20mm engine-mounted cannon, the definitive model having a 1600hp Hispano-Suiza 12Z engine.

Three other projects followed, the first two of which were based on the VG-39bis : the VG-40 with a Merlin III engine, the VG-50 with an enlarged wing with a V- 1710-39 Allison engine and finally the VG-60 Hispano- Suiza 12Y -51 1000 horsepower , with a Sidlowsky Planiol compressor.



Above: Captured Arsenal VG-33



Above: Arsenal VG-33

Modelling the VG-33/39

Well from what I could find the choices are pretty limited - I guess not surprising given the very low numbers of the aircraft actually made. In 1/72 your choices are Azur, Pend Orielle Model Kits, Replica and a vac-form made by Airmodel. I could only find the Airmodel kit still readily available from their website. The CMK website listed the 1/72 kit out of production and I think you'd have to scour ebay for the POM and Replica kits.

In 1/48 Azur still supply the kit, although listed as 'out of stock' on their website.... Fonderie Miniatures produced two versions but they now look harder to find than rocking horse sh..... !



Above: 1/48 Fonderie Miniatures Arsenal VG-33 by Jean Barby (published in Wing Masters, Issue 20)

A NATTY BUILD

Airfix 1/72 Folland Gnat T1 by Dimitri Berdebes



I thought I would start with something small this year, and I found the Airfix 1/72 scale Folland Gnat T1 in my stash, which is no mean achievement as there are at least 700 kits stashed away (Yikes).

This is one of their recent new toolings and very well engineered it is. I decided to make the kit OOB, to get me my creative juices flowing. Remembering some outrageous claim I made in December.

The kit went together easily with the only addition from me of home made wing tip lights. Painting was also straight forward; I used Tamiya enamel chrome silver for the natural metal finish and Gunze acrylic fluro orange. This I sprayed over a coat of white but found it translucent so decided to lay down a coat of red then try the fluro orange, this worked out fine.

The kit comes with a comprehensive decal sheet with lots of stencil detail covering one version. I ran into trouble during decaling as I found the decals covering the fluro paint would stick fast and could not be repositioned. This cost me a tail fin flash which I had to paint on using Tamiya masking tape and airbrushing on the colours (port side). However I overcame the problem by using Future to float the decals on - this worked fine.

And there you have it a Natty little trainer. What did I build next? Why, the Airfix DeHavilland Vampire T11 with RNZAF markings.... coming next month.

All the best
Dimitri.





AIRFIX

1:72 FOLLAND GNAT T.1

A01006

MODEL KIT • MAQUETTE A MONTER • MODELLBAUSATZ • MODELLO A SCALA • BOUWMODEL • MAQUETA PARA MONTAR • PLASTBYGGESATS • RAKENNUSARJA • MODELO PARA CONSTRUIR • MODELBYGGESET • ΤΥΝΑΜΩΑΔΟΦΟΙΜΕΝΟ ΜΟΝΤΕΑΔ

The Man Cave

This Month: Rob Willis



This month we've resurrected the Man Cave feature to give long standing members a reminder perhaps of where they were a few years ago and to encourage new members to share their modelling disaster areas.

So to kick things off I've repeated the article published back in November 2012 about my own Man Cave, including an update (in *Italics*). Read on....

Following on from last month's inaugural Man Cave entry from Dimitri, here are pictures of my own mess my wife sarcastically refers to as ManLand.... We have an old bungalow that has been undergoing renovations for the last 3-4 years so my modelling space is limited to the

dining room table and a small single garage in the backyard (*not much has changed here except we're now renovating the kitchen/dining area and the dining table has been shoved into a spare room along with tons of other junk...*). Despite having a 4 bedroom house and only two persons dwelling within, I still haven't managed to acquire a modelling room – yet my wife has a guest room and a dressing room – go figure! The photos here are around about 30% of my collection – many more are stuffed into boxes and stored at my folks place who just happen to have a large dry basement bless them....

I tend to build numerous models at any one time – partly due to the setup of my shed (explained below)

and partly due to my low boredom threshold! I try to build things with similar requirements (like all needing the same interior colour or all needing a gloss white finish, etc...).

My shed is one of the un-powered varieties so has no lights or power for all my man-tools (i.e. air brush - not to be confused with lady-tools such as a hair brush...)(*Currently my shed is chocca block with building materials and barely accessible - see the pictures next page - if I want to airbrush, I have to aim for a fine weekend so I can throw some stuff out of the shed to get to my work bench...*). So most of my fettling, fiddling, gluing and detail painting is done at the dining room table and dirty tasks like sanding over the laundry sink . I then accumulate

the afore mentioned models with similar requirements, run a power lead out to the shed, and spend a few hours air brushing. The builds then continue over the next few days or weeks with masking, etc, until the next air brush session out in the shed.... Unless I get bored of course at which point I start something new! I have a habit of starting stuff because it happens to be the colour paint I have loaded in the air brush – the number of Spitfires I've built that way because of that weird interior green shade I can tell you...

My main area of interest is 1/48 aircraft, pretty much any era

although I do tend to lean towards Italian WW2, Allied WW2 and RAF Cold War. I do build 1/32, an interest reinvigorated by the Wingnut Wings kits, and I've dabbled in 1/72 and 1/144.

I love unusual models of unusual subjects, like prototypes or obscure aircraft types. I also build a bit of sci-fi, the odd figurine, a ship or two and a few subs. AFV don't hold much interest but I have built one or two. My other main area of interest is classic cars and F1, in 1/24th and 1/20th respectively. I also tend to buy/build in themes – I love a road and race version of the same car for example, or a series of the same

aircraft from the prototype through to the final version.

I don't tend to focus too much on super-detailing my builds – not too fussed about resin this and photo-etch that – kits are pricey enough without adding all that as well. Having said that, if the kit parts are glaringly poor, and an after-market part is available, I may use it. I'm a bit the same when it comes to colours and basic shapes – I tend to build for the pleasure of the process rather than get hung up on building an historically accurate representation of the real thing... repeat after me: it's only a hobby, it's only a hobby....



Above: the stash in November 2012



Above: as it is now - most of the kits are now in boxes in storage to make room for the finished kits in the filing boxes - and I actually had to move a door, saw horses, and 3 sheets of gib to take this photograph....

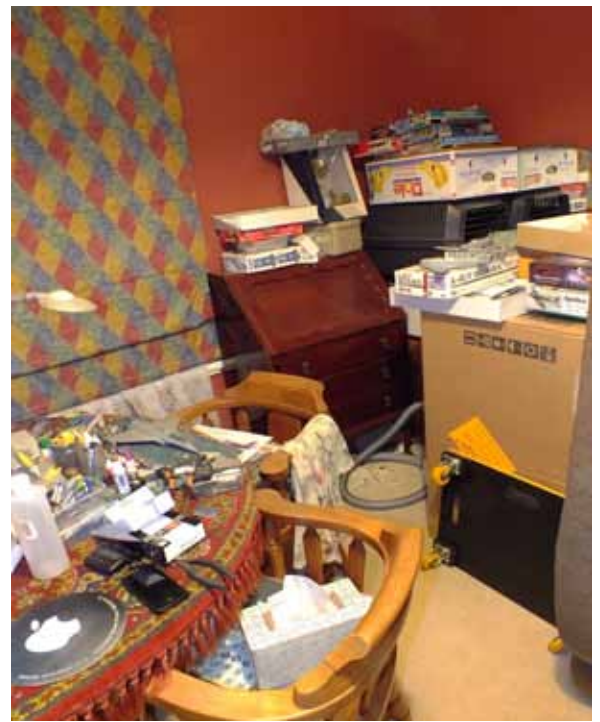
I've recently started building more of my kits focussing on the style of painting often called 'spanish school' – can't quite bring myself to go all out on them just yet and still resort to basics like washes and dry-brushing, but I would say my preferred style is to over-accentuate the detail. I guess close-up they look over-done, but on a shelf 6 feet away they look just right...

And as for displaying my models, alas, having lost claims on any of the good rooms in the house, all my models go into boxes on completion and shoved

in a wardrobe or on shelf somewhere. I have plans for display cabinets but have to complete parts of the house renovations first – master bedroom and ensuite on the go at the moment, kitchen next year....(yep - kitchen/dining this year which is the current mess I've created in the house...) Maybe one day I'll get around to that display cabinet!!

Cheers Rob

Right: my current inside work space...



Above: the shed in November 2012



Above: and now in March 2014 – amazing what a year or so of reonvation junk can generate....

GALLERY

ON THE TABLE - FEBRUARY 2014 CLUB NIGHT



1/72 Special Hobby Northrop XP-56 "Black Bullet" - John Watkins



1/72 Saab Tunnan



Airfix Angel Interceptor



Sorry Vince - a truck.....



GALLERY



Sorry again Vince - a Chev maybe - must write these things down...



Above and below: Tamiya Suzuki Katana



GALLERY - In Progress...



1/72 Airfix Hawker Typhoon



1/72 Focke Wulf Fw-190



1/48 Fly Models BAC RNZAF Strikemaster

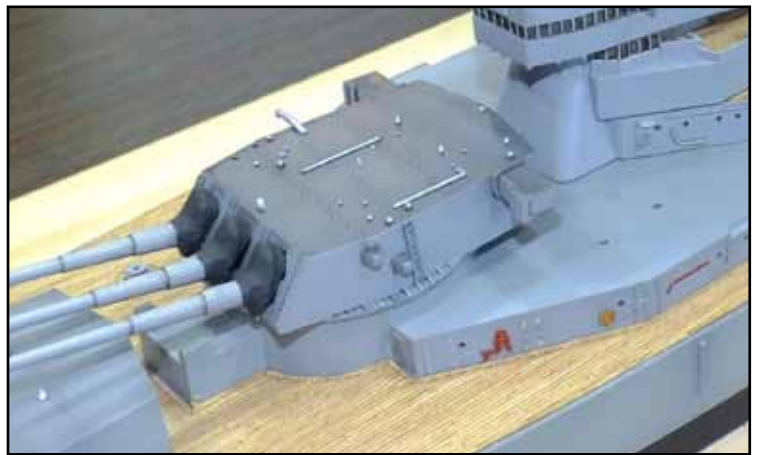


1/48 Fly Models BAC RNZAF Strikemaster



GALLERY - In Progress...

John Darlington's 1/350th USS Missouri...



SIGN OFF



Above: 1/48 Alley Cat Shorts Tucano

LAST WORDS

Many thanks to Barry Burton for an update on his Tempest build. And thanks to Dimitri for his quick-build article of the 1/72 Airfix Gnat. He'll be able to join the land of the grown-ups later this year when Airfix release the 1/48 version...

I've changed flavours of flag this month, with a change from Italian to French subjects - no particular reason except that I have a few kits floating around out of storage that I thought I'd write about while I had them in my hands.

...and again, a reminder that if you have anything to contribute, be it images of an event you went to, a model you're building or fancy reviewing, something you've bought online or anything else even remotely modelling related you think may interest the rest of the club, send it through to me at: jaxbw@orcon.net.nz or have a chat with me at Club Night.

Cheers
Rob



SCALE-MAIL